

## Template til SME 3009 II improved

Efter print måles og tjekkes afstanden fra A til 3009-pivohullets midte til at være 213,2 mm.

Place perforation on turntable spindle. 3012 for 12" or 3009 for 9" effective length pick-up arms. Swing template to most convenient position, allowing sufficient clearance for balance weights (see table). Keep template flat and pass a long needle vertically through centre point A into motor board. Figure 1. Disengage spindle and lower template onto motor board. Figure 2. Spike through centre points B and four  $\frac{3}{8}$ " holes. Remove template and drill two  $\frac{1}{8}$ " holes. Cut away area indicated by shading to form a slot.

Figure 1

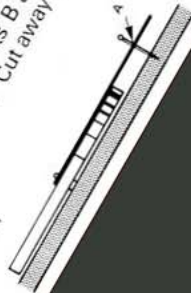
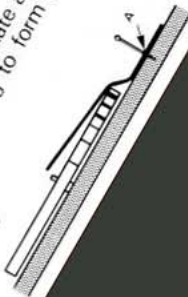
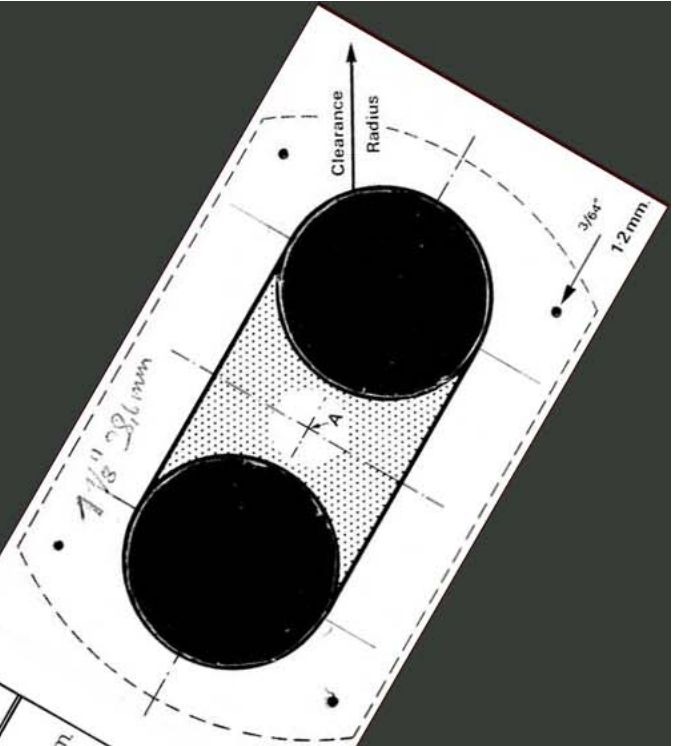


Figure 2



Pick-up arm Model	Clearance Radius
Series II 3012	3 1/4" 83mm.
Series II 3009	
Model 3012-R	2 3/4" 70mm.
Model 3009-R	
Series III	2 1/2" 64mm.
Series III S	
Series II Imp.	2" 51mm.
Series II S2 Imp.	



3009